

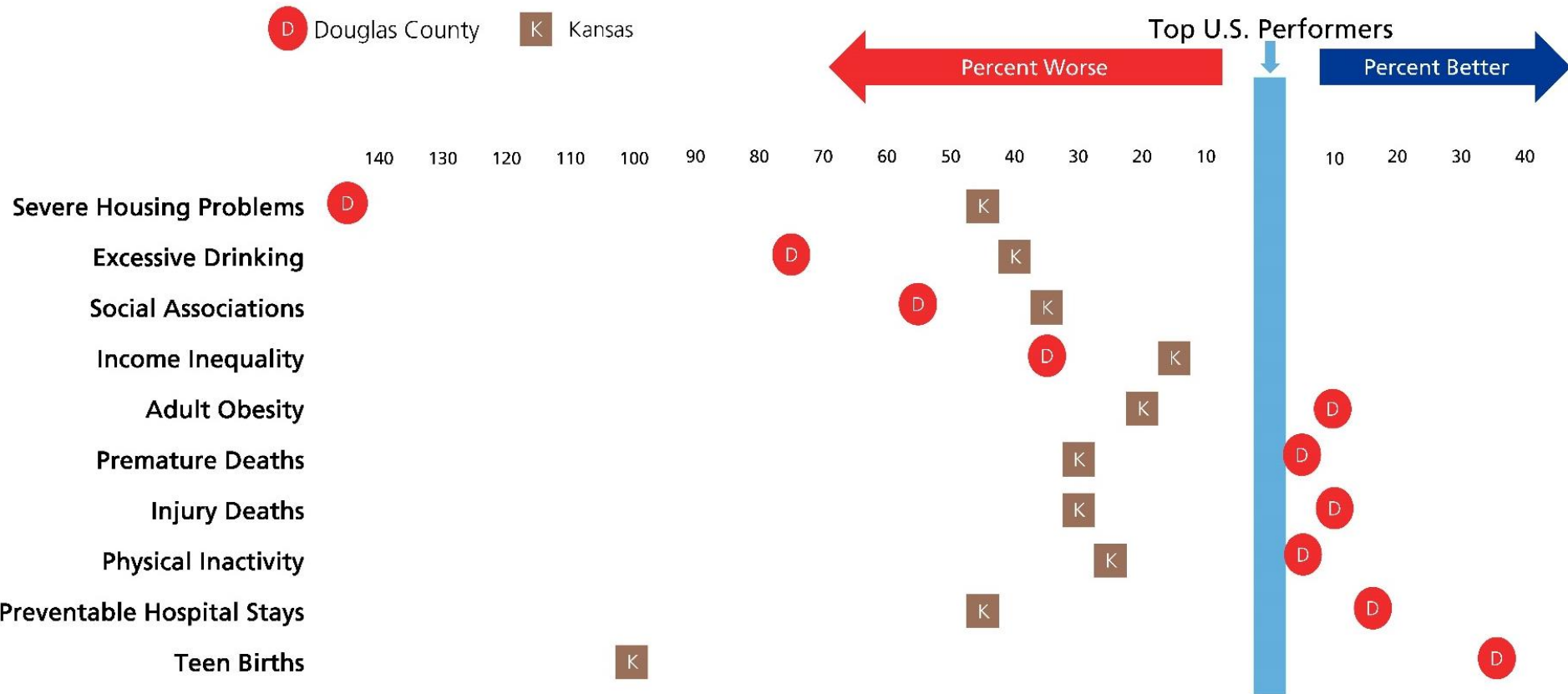


REPORT ON THE HEALTH OF LAWRENCE

LAWRENCE CENTRAL ROTARY CLUB

How healthy is Lawrence/DG Co.?

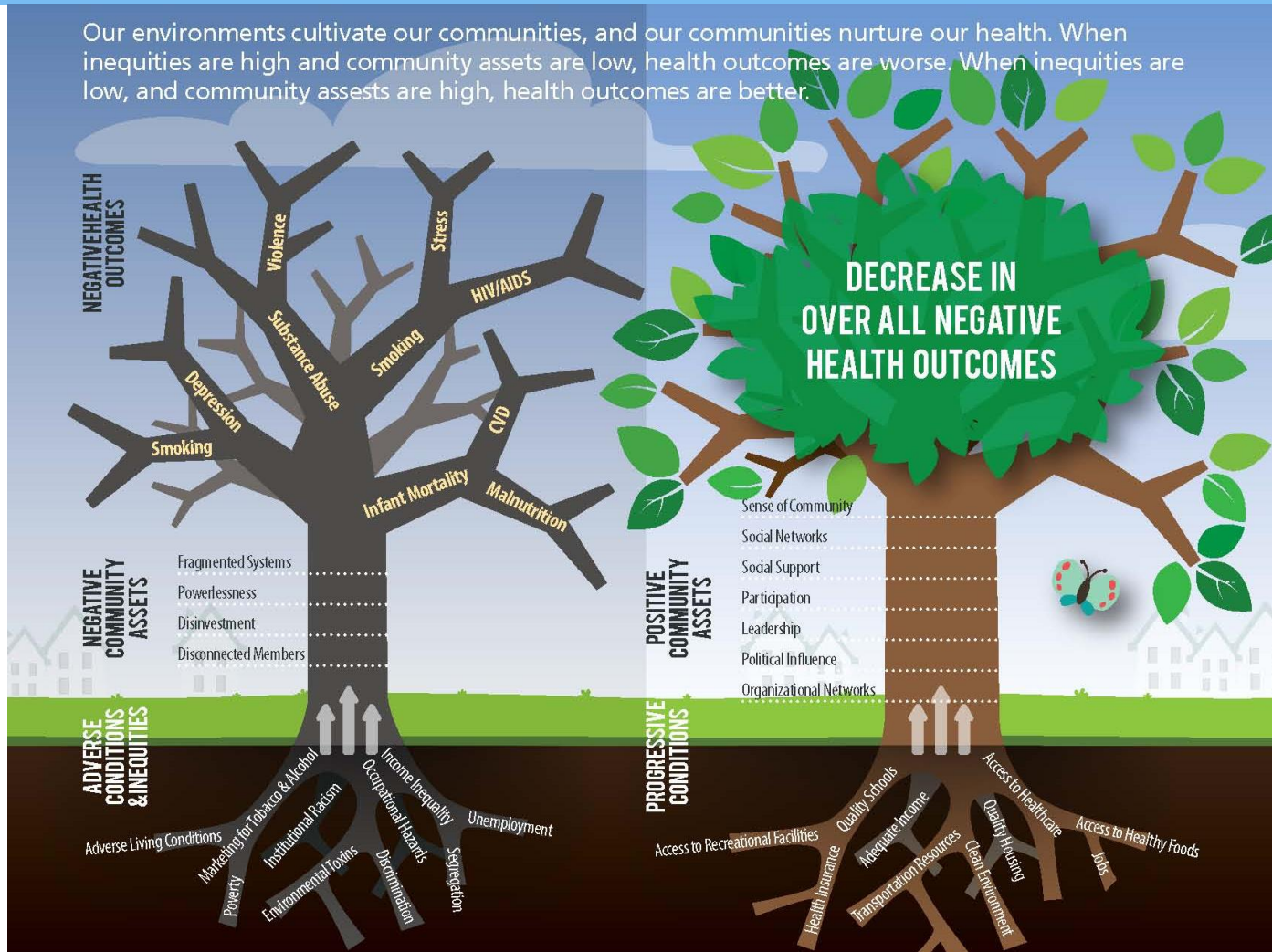
2



Source: University of Wisconsin County Health Rankings - 2016

What determines our community's health?

Our environments cultivate our communities, and our communities nurture our health. When inequities are high and community assets are low, health outcomes are worse. When inequities are low, and community assets are high, health outcomes are better.

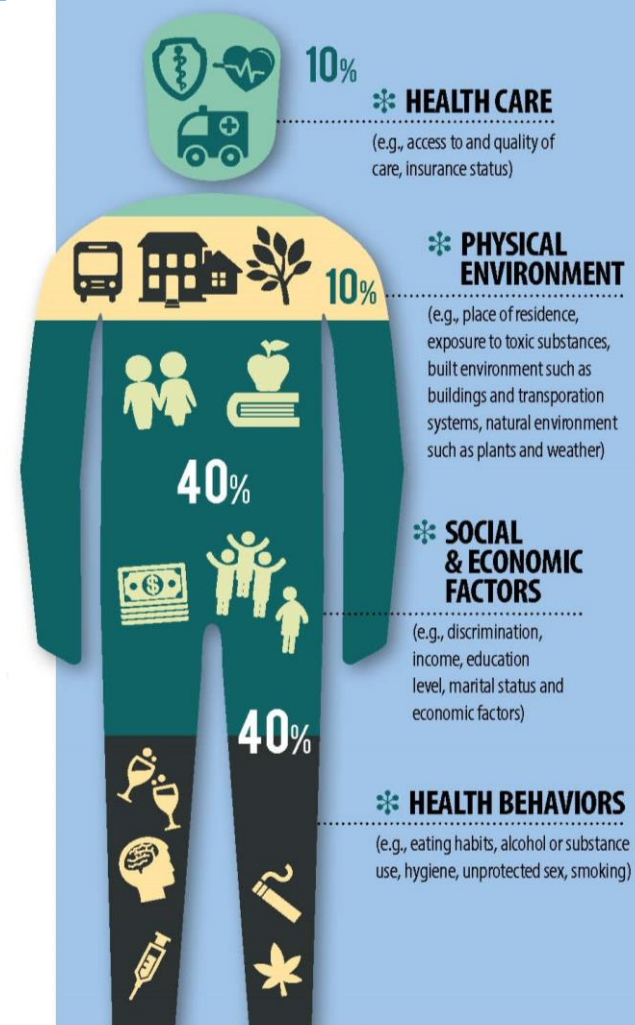


This figure is adapted from Brennan Ramirez LK, Baker EA, Metzler M. Promoting Health Equity: A Resource to Help Communities Address Social Determinants of Health. Atlanta: U.S. Department of Health and Human Services, Centers for Disease Control and Prevention; 2008. Available at: <http://www.cdc.gov/nccdphp/dch/programs/healthycommunitiesprogram/tools/pdf/SDOH-workbook.pdf>

What determines our individual health?

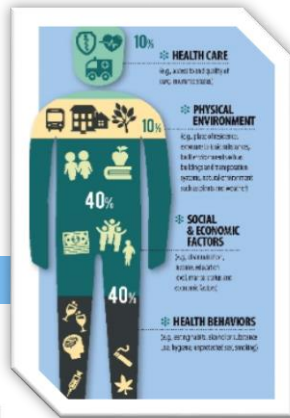
4

PERCENTAGE CONTRIBUTING TO OVERALL HEALTH

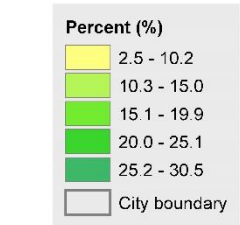
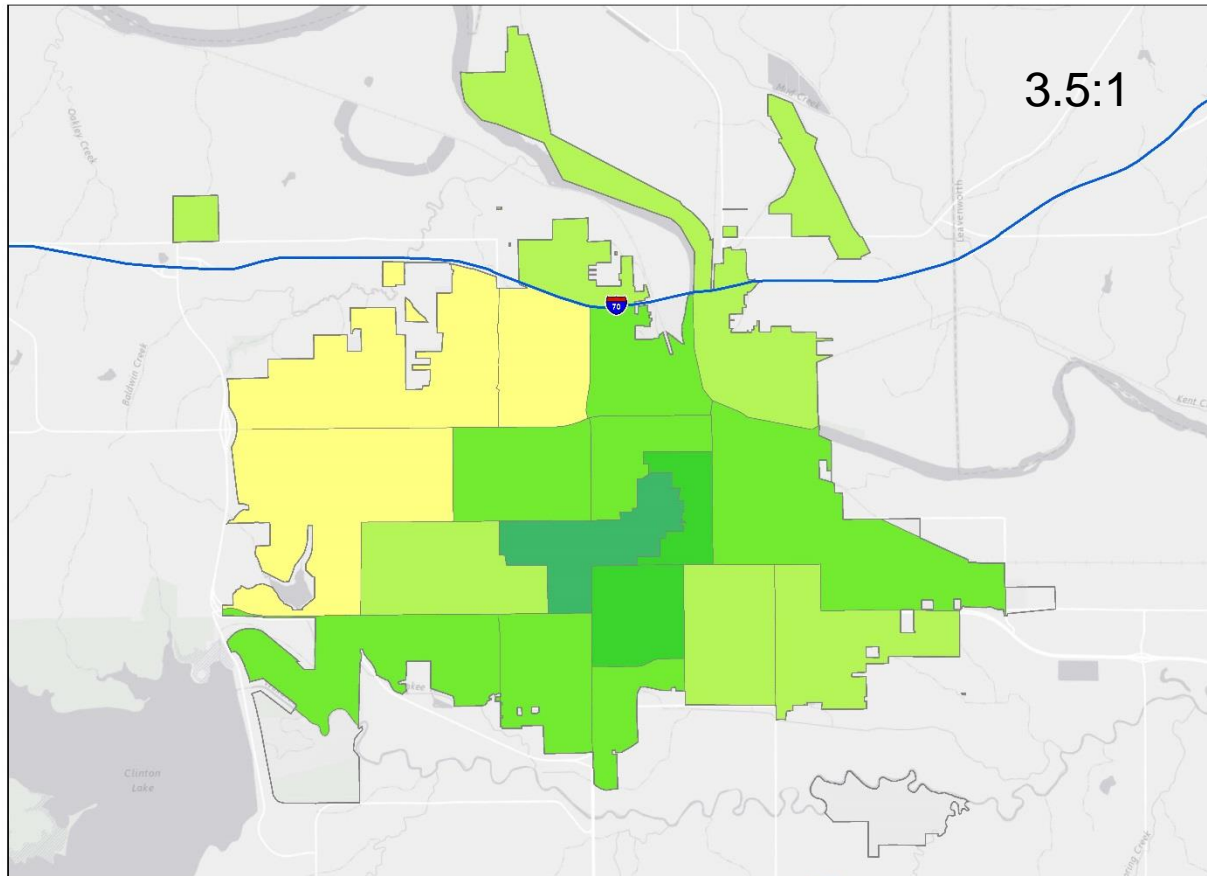


Source: Booske B.C., Athens J.K., Kindig D.A., et al. County Health Rankings Working Paper: Different Perspectives for Assigning Weights to Determinants of Health. February 2010. Available at: www.countyhealthrankings.org/sites/default/files/differentPerspectivesForAssigningWeightsToDeterminantsOfHealth.pdf.

Health Care - insurance

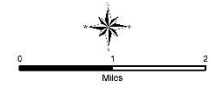


Current lack of health insurance among adults aged 18-64 years by census tract, Lawrence, KS, 2014



Classification:
Jenks natural breaks (9 classes) based on data for all 500 cities' census tracts. Legend depicts only those data classes within this map extent.

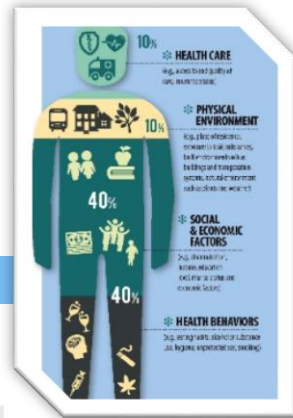
Census tracts with population less than 50 were excluded from the map.



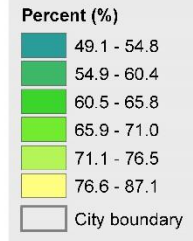
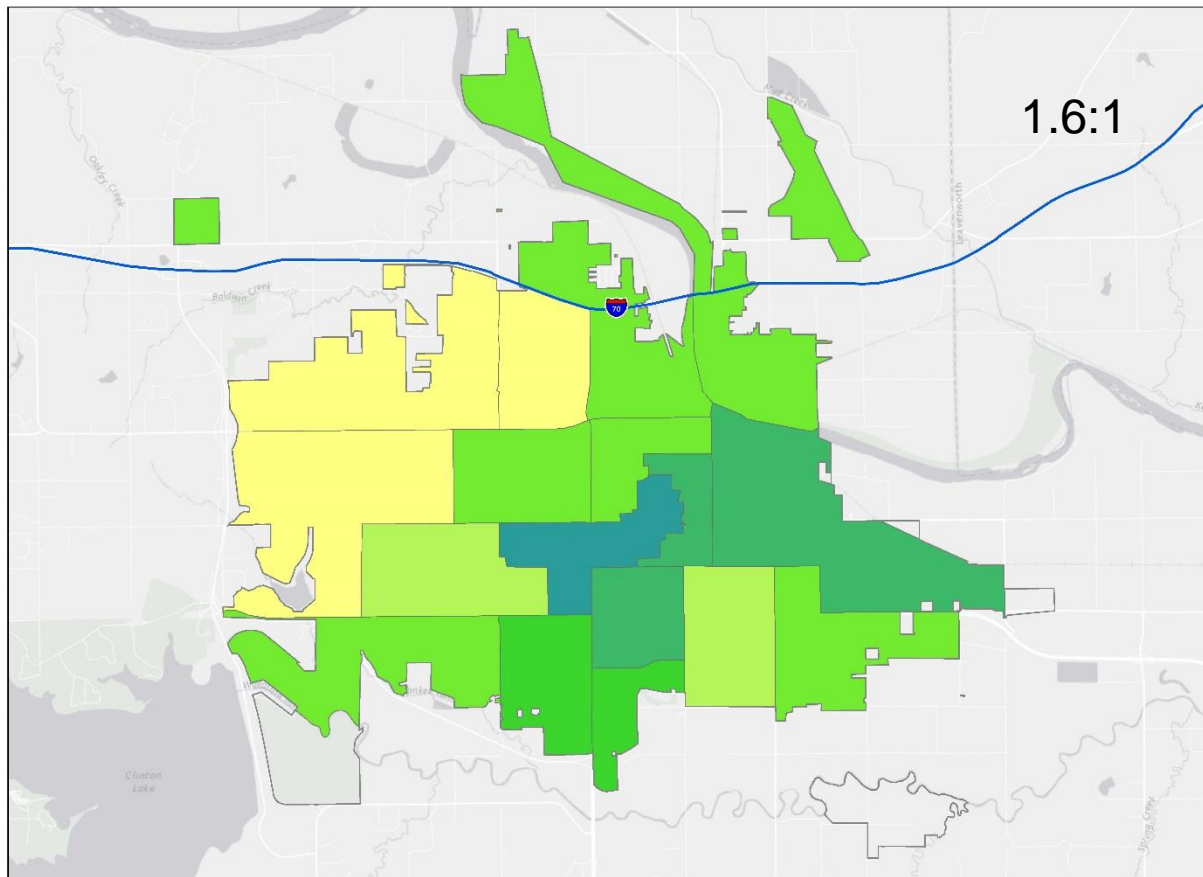
Data sources:
CDC BRFSS 2014, US Census Bureau 2010 Census, ACS 2010-2014.



Health Care - dental

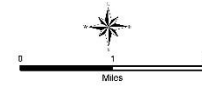


Visits to dentist or dental clinic among adults aged ≥ 18 years by census tract, Lawrence, KS, 2014



Classification:
Jenks natural breaks (9 classes) based on data for all 500 cities' census tracts. Legend depicts only those data classes within this map extent.

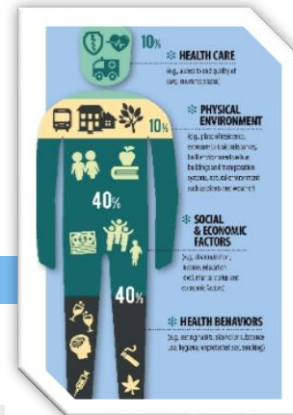
Census tracts with population less than 50 were excluded from the map.



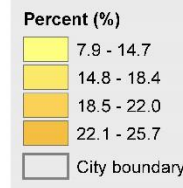
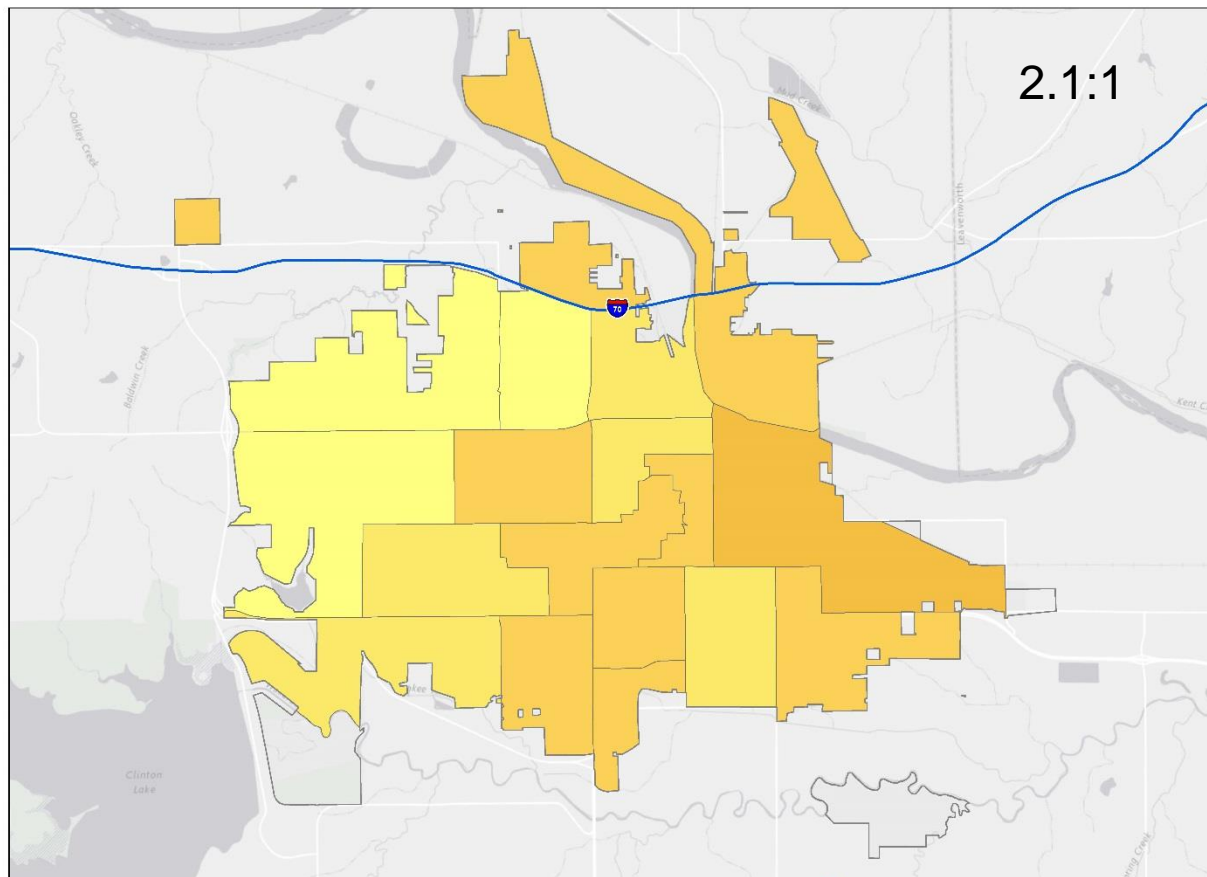
Data sources:
CDC BRFSS 2014, US Census Bureau 2010 Census, ACS 2010-2014.



Health Behaviors – *physical activity*

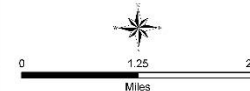


No leisure-time physical activity among adults aged ≥ 18 years by census tract, Lawrence, KS, 2014



Classification:
Jenks natural breaks (9 classes) based on data for all 500 cities' census tracts. Legend depicts only those data classes within this map extent.

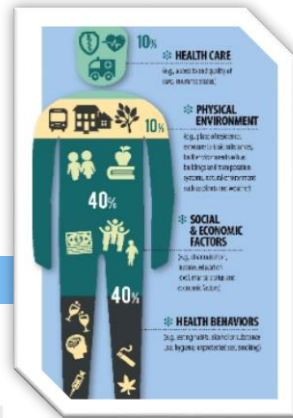
Census tracts with population less than 50 were excluded from map.



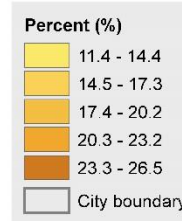
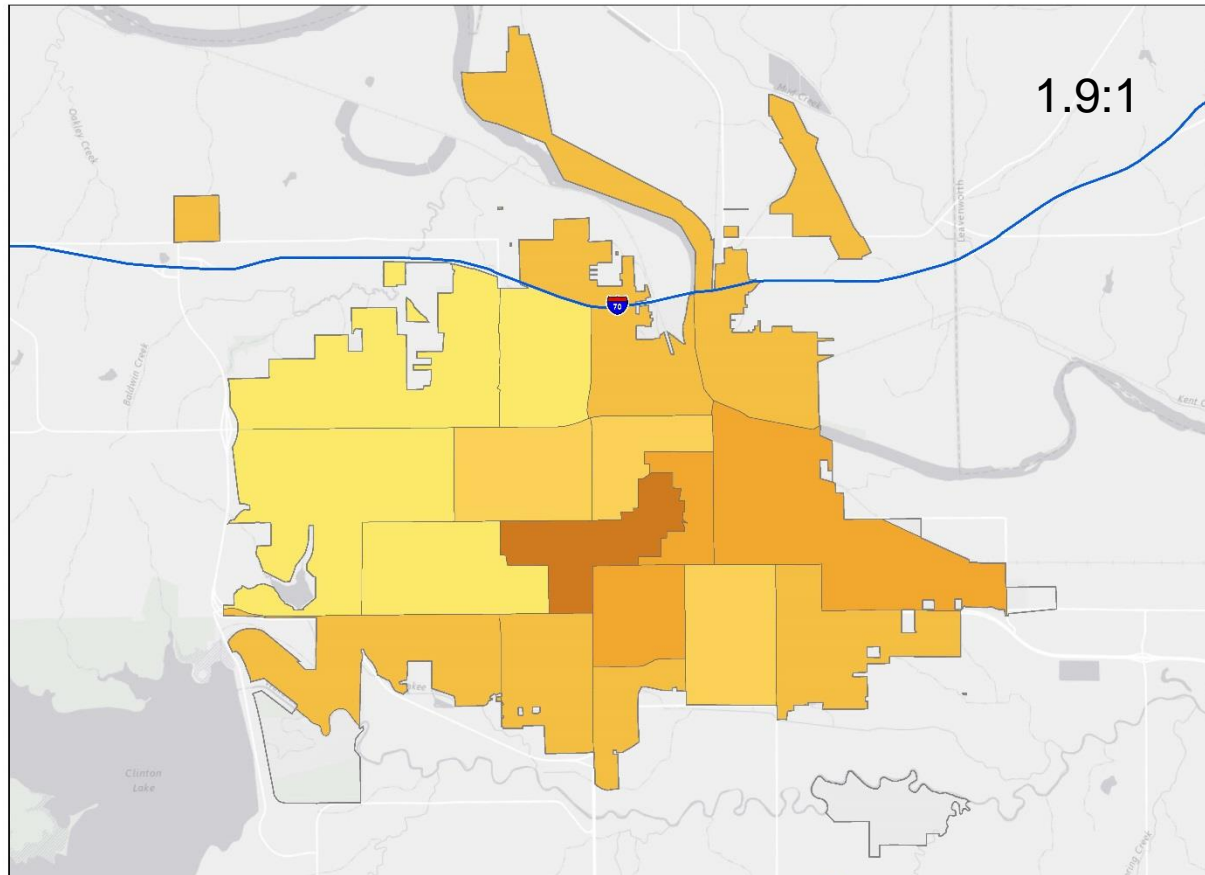
Data sources:
CDC BRFSS 2014, US Census Bureau 2010 Census, ACS 2010-2014.



Health Behaviors – *smoking*

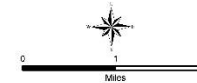


Current smoking among adults aged ≥18 years by census tract, Lawrence, KS, 2014



Classification:
Jenks natural breaks (9 classes) based on data for all 500 cities' census tracts. Legend depicts only those data classes within this map extent.

Census tracts with population less than 50 were excluded from the map.

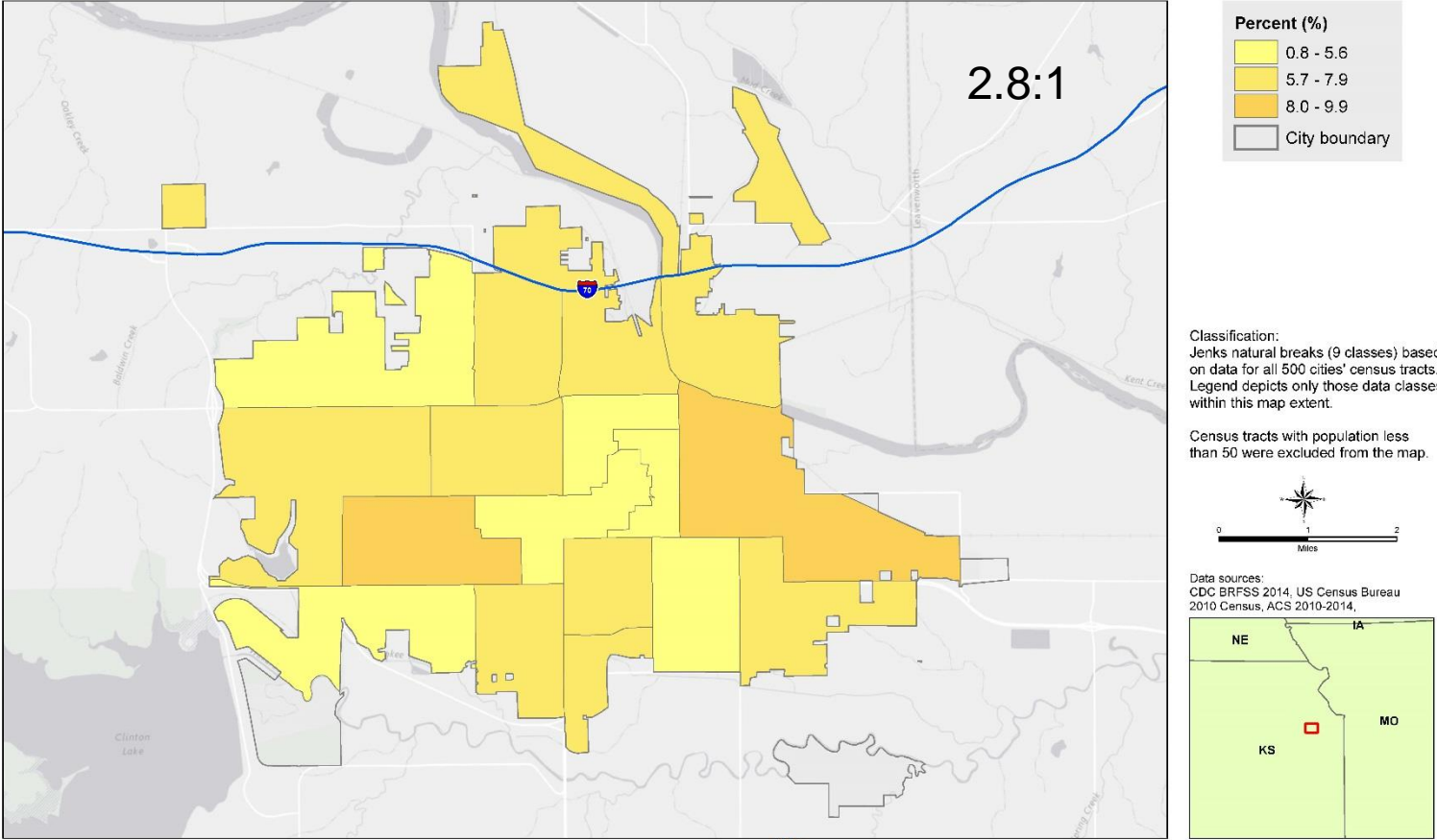


Data sources:
CDC BRFSS 2014, US Census Bureau 2010 Census, ACS 2010-2014.



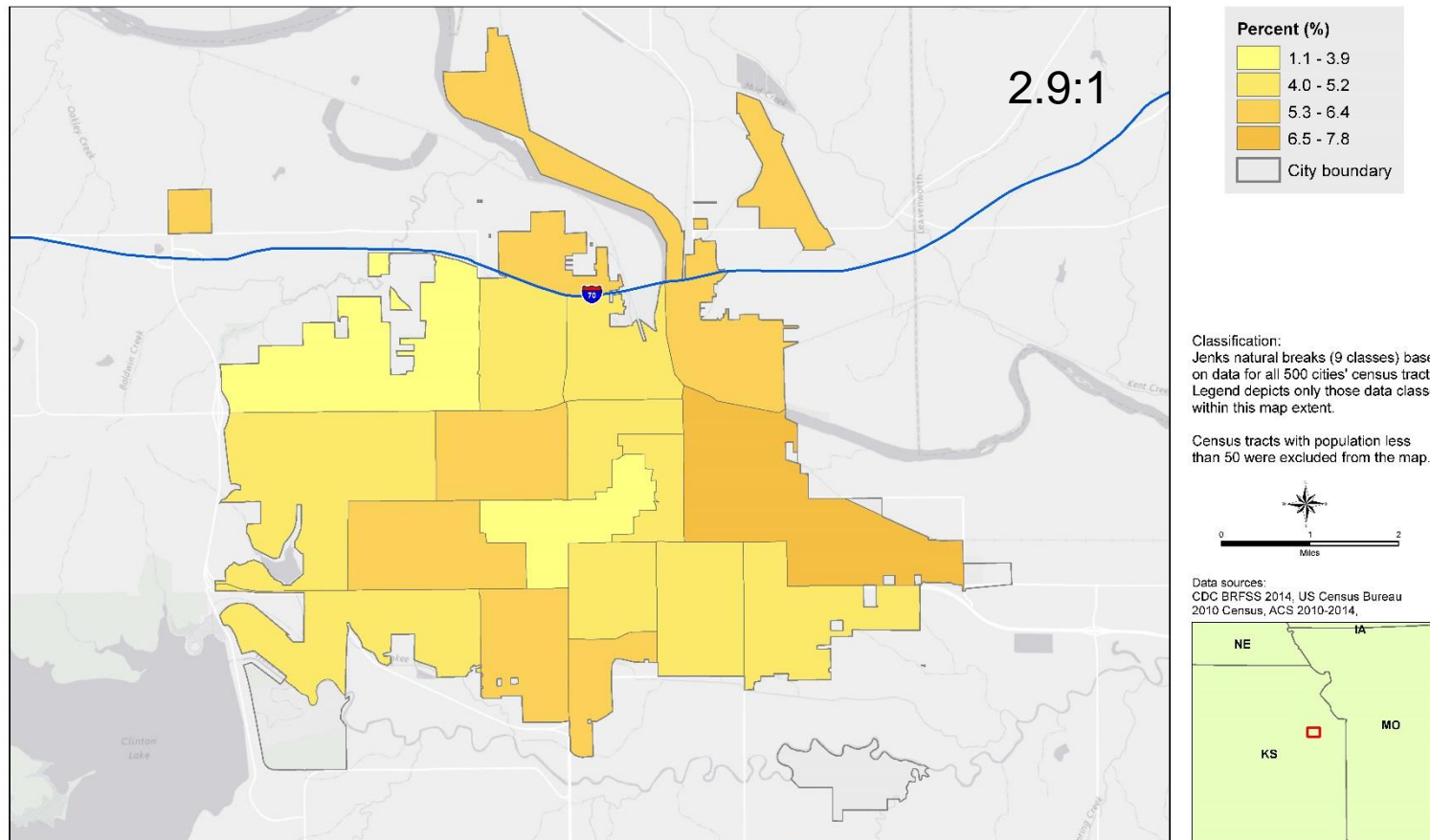
Health Outcomes - *diabetes*

Diagnosed diabetes among adults aged ≥ 18 years by census tract, Lawrence, KS, 2014



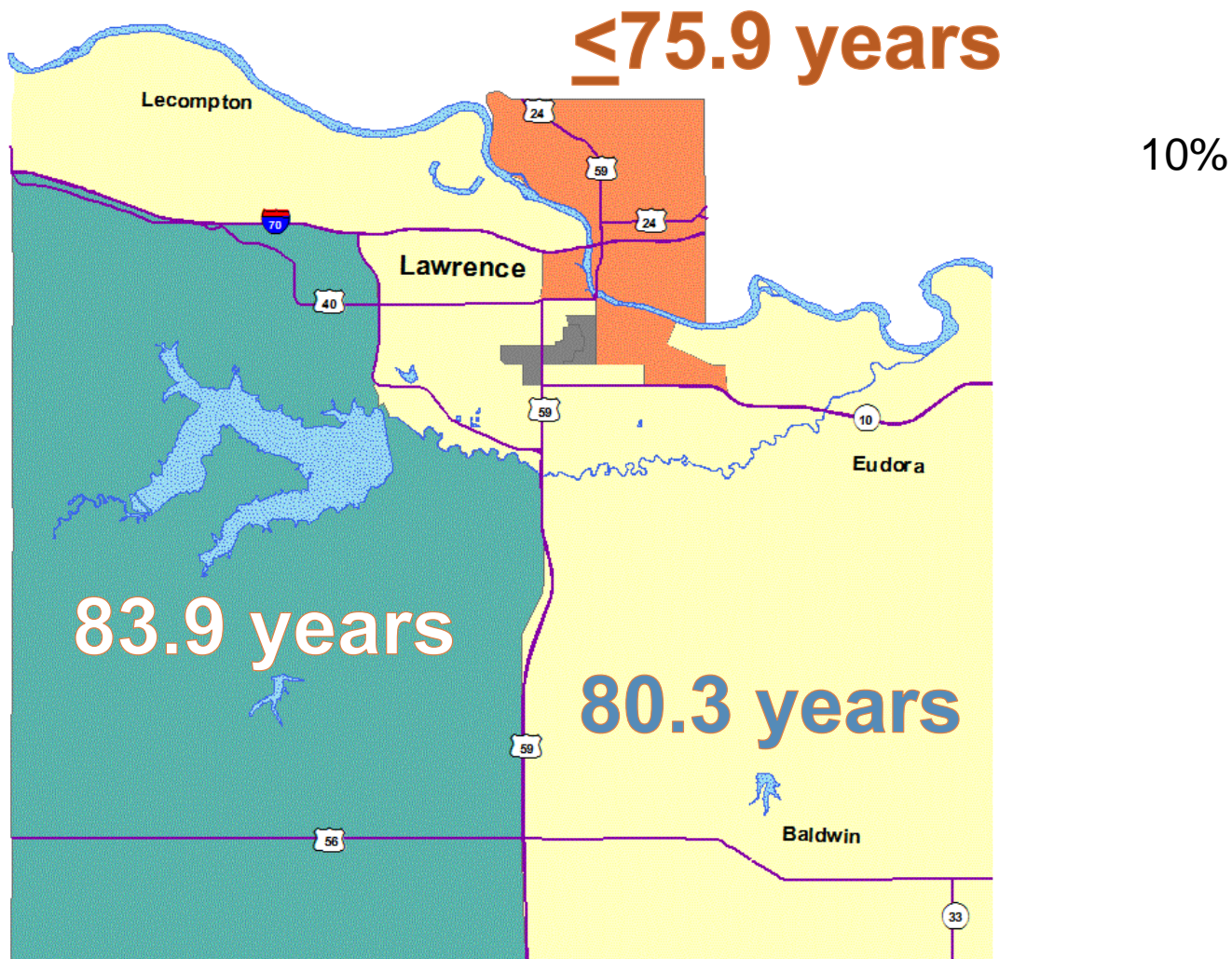
Health Outcomes - copd

Chronic obstructive pulmonary disease among adults aged ≥ 18 years by census tract, Lawrence, KS, 2014



2.9:1

Estimated Life Expectancy



(Vital Statistics 2010-2015)

What is needed here?

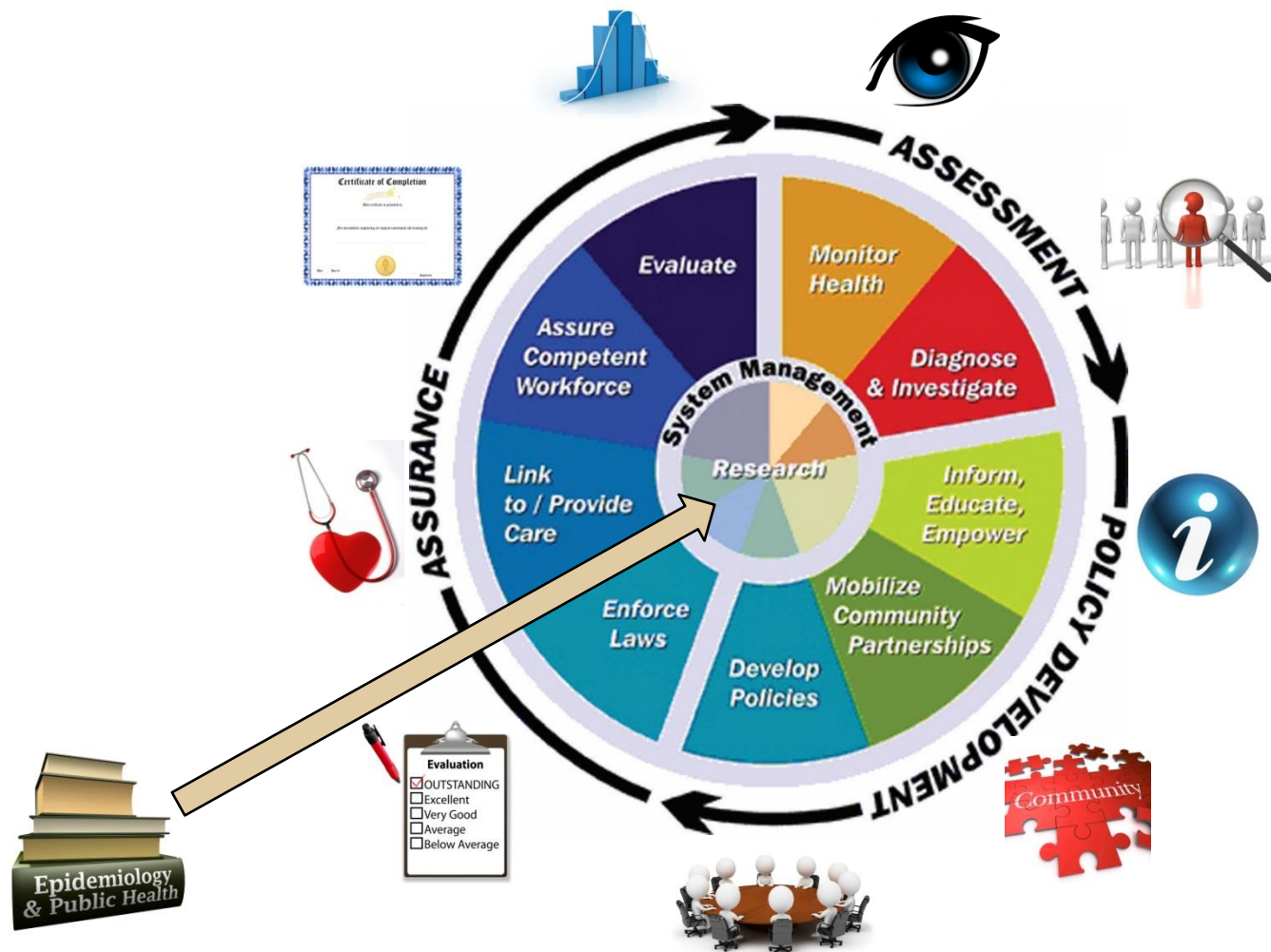
12



Public Health V3.0

Chronic Disease and Essential public health services

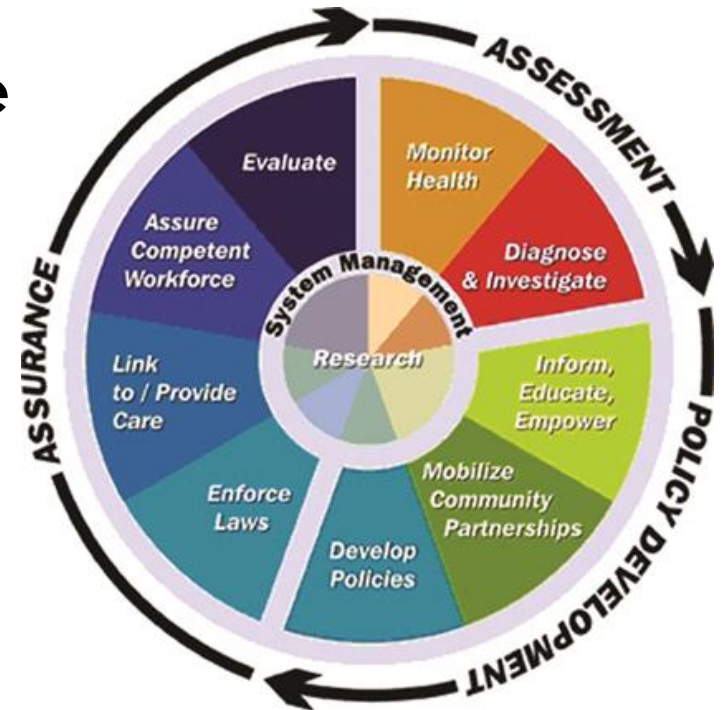
13



Health Board By-laws

14

Section 2. The Health Department.
The purpose and function of the Health Department shall be to provide the essential public health services as described by the National Association of County and City Health Officials (NACCHO) *Operational Definition of a Functional Local Health Department* for the population of Douglas County.



The next Community Health Plan

15

Planning Focus



Discrimination
and racism

Healthy Foods and Physical Activity

Poverty and Jobs

Behavioral Health

Affordable Housing

Survey – Poverty and Jobs

16

	Strength	Problem
People can receive high quality education or skills training	Lawrence >\$25K income White Black/African American	
Transportation is available to all	Lawrence < \$50K income Black/African American Latino Native American	
People are able to find and keep jobs that pay well.		Baldwin City, Eudora, Lawrence, Lecompton, Unincorporated DG, > \$5K income, White, Black/African American, Latino, Native American, Other

Survey – Affordable Housing

17

	Strength	Problem
Safe and affordable housing is available		Baldwin City Lawrence Unincorporated DG > \$5K income White Native American

Survey – Equity and Discrimination

	Strength	Problem
Our community has a fair criminal justice system	Baldwin City Lecompton > \$75K income	< \$5K income Black/African American
People are free from the threat of violence	Baldwin City Eudora < \$5K income	Other
People are treated fairly and without discrimination	Baldwin City Eudora Lecompton Unincorporated DG	\$5-15K income Black/African American Other
We value diversity, equity and inclusion	Lawrence	

Initiatives

